

SALCHA

♩ = 128

7

Musical staff with treble clef, 4/4 time signature, and a 7-measure rest.

A *f*

Musical staff with treble clef, starting with a forte dynamic marking and a first ending bracket.

Musical staff with treble clef, continuing the melody with a first ending bracket.

13

Musical staff with treble clef, starting with a second ending bracket.

17

Musical staff with treble clef, continuing the melody.

21

Musical staff with treble clef, starting with a triplet.

25

Musical staff with treble clef, continuing the melody.

29

Musical staff with treble clef, ending with a "To CODA" marking.

33

Musical staff with treble clef, containing a double bar line and a slash pattern.

37

Musical staff with treble clef, containing a double bar line and a slash pattern.

41

Musical staff with treble clef, containing a double bar line and a slash pattern.

D A MIN⁷ D⁷

B MIN^{7(b5)}

E 7(b9)

A MIN⁷

D⁷

B MIN^{7(b5)}
1.

E 7(b9)

A MIN

E 7(b9)

B MIN^{7(b5)}
2.

E 7(b9)

A MIN

A⁷

2 Fl ° TE

SALCHA

E D MIN⁷

G⁷

C

C MAJ⁷

C⁶

C MAJ⁷



45 C MIN⁷

F⁷

B MIN^{7(b5)}

E^{7(b9)}



49 **F** A MIN⁷

D⁷

B MIN^{7(b5)}

E^{7(b9)}



53 A MIN⁷

D⁷

B MIN^{7(b5)}

E^{7(b9)}

A MIN

E^{7(b9)}

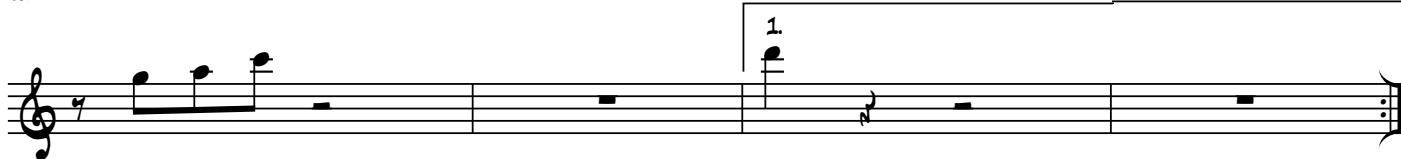


57

G



61



65



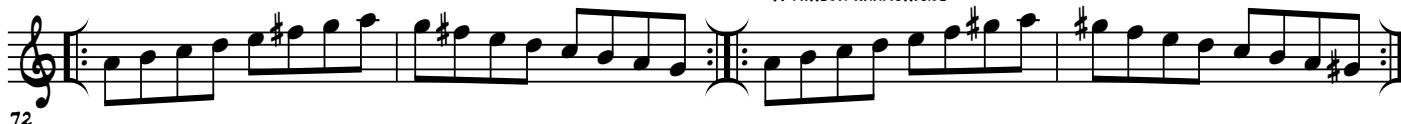
69



71

A DORIEN

A MINEUR HARMONIQUE



72

A AEOLIEN

A LOCRIEN



76